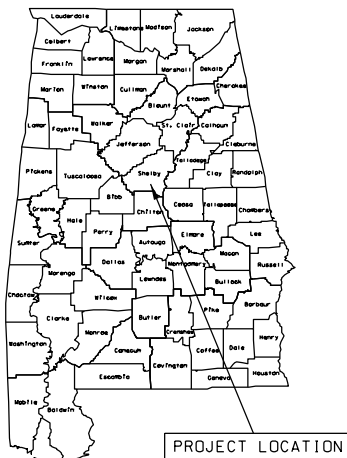


STATE	REFERENCE PROJECT NO	FISCAL YEAR	SHEET NO	LAST SHEET NO
AL	SCP 59-976-25	2025	1	16

SHELBY COUNTY HIGHWAY DEPARTMENT **PLANS OF PROPOSED PROJECT SCP 59-976-25**

RE-STRIPING OF VARIOUS COUNTY ROADS

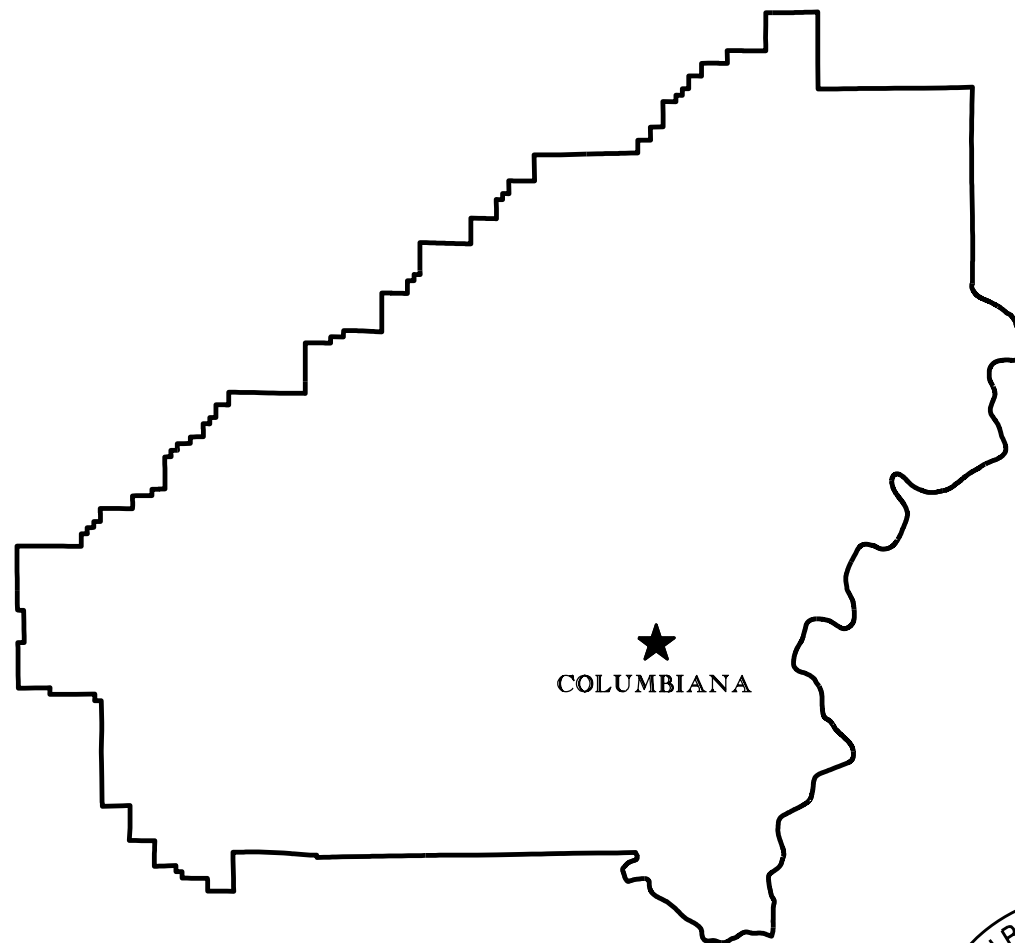


STATE LOCATOR

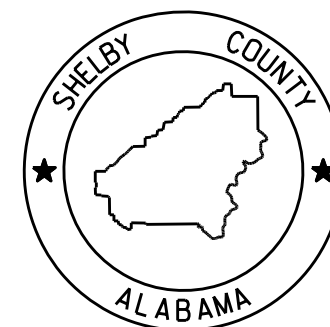
COUNTY ENGINEER
DAVID WILLINGHAM, P.E.

COUNTY COMMISSIONERS

DISTRICT #1 KEVIN MORRIS	DISTRICT #2 TOMMY EDWARDS
DISTRICT #3 JON PARKER	DISTRICT #4 WARD WILLIAMS
DISTRICT #5 ELWYN BEARDEN	DISTRICT #6 JOSH SISK
DISTRICT #7 LINDSEY ALLISON	DISTRICT #8 RICK SHEPHERD
DISTRICT #9 DR.ROBBIE HAYES	



NOTE : THESE PLANS HAVE BEEN PREPARED TO
 CONFORM WITH ALABAMA DEPARTMENT
 OF TRANSPORTATION STANDARD
 SPECIFICATIONS DATED 2022.



REFERENCE PROJECT NO	FISCAL YEAR	SHEET NO
SCP 59-976-25	2025	1A

INDEX TO SHEETS / LIST OF STANDARD DRAWINGS
PROJECT NO. SCP 59-976-25
SHELBY COUNTY

SHEET NO. 1	TITLE SHEET
SHEET NO. 1A	INDEX TO SHEETS / LIST OF STANDARD DRAWINGS
SHEET NO. 2	PROJECT & TRAFFIC CONTROL NOTES
SHEET NO. 3	SUMMARY OF QUANTITIES
SHEET NO. 3A	SUMMARY OF QUANTITIES BY UNIT
SHEET NO. 4	OVERALL SITE MAP
SHEET NO. 5	UNIT #1 PLAN SHEET
SHEET NO. 6	UNIT #2 PLAN SHEET
SHEET NO. 7	UNIT #3 PLAN SHEET
SHEET NO. 8	UNIT #4 PLAN SHEET
SHEET NO. 8A	UNIT #4 CROSSWALK DETAILS SHEET
SHEET NO. 9	UNIT #5 PLAN SHEET
SHEET NO. 10	UNIT #6 PLAN SHEET
SHEET NO. 11	UNIT #7 PLAN SHEET
SHEET NO. 12	UNIT #8 PLAN SHEET
SHEET NO. 12A	UNIT #8 SOUTHBOUND DETAILS SHEET
SHEET NO. 12B	UNIT #8 NORTHBOUND DETAILS SHEET
SHEET NO. 13	UNIT #9 PLAN SHEET
SHEET NO. 14	UNIT #10 PLAN SHEET
SHEET NO. 15	THERMOPLASTIC RUMBLE STRIP STANDARD DRAWING
SHEET NO. 16	TRAFFIC CHANNELIZATION DEVICES STANDARD DRAWING

THE FOLLOWING IS A LIST OF STANDARD OR SPECIAL DRAWINGS CONTAINED IN THE STATE OF ALABAMA HIGHWAY DEPARTMENT SPECIAL AND STANDARD HIGHWAY DRAWINGS BOOKLET DATED 2025 WHICH APPLY TO THIS PROJECT:

<u>DRAWING NO.</u>	<u>DESCRIPTION</u>
PS-701-6	DETAILS OF TRAFFIC STRIPING FOR TWO LANE HIGHWAYS
197-NPL	DETAILS NO PASSING LINES - 2 LANE, TWO DIRECTION ROADWAY
TCM-703	PAVEMENT LEGENDS & MARKINGS (SHT 1 OF 2)
TCM-703	PAVEMENT LEGENDS & MARKINGS (SHT 2 OF 2)
PM-705-1	DETAILS OF PAVEMENT MARKERS CLASS A, A-H & B
PM-705-2	DETAILS SHOWING APPLICATION OF PAVEMENT MARKERS
RRX-107-2	RAILROAD CROSSING ACTIVE WARNING - SIGNS AND PAVEMENT MARKINGS
RRX-107-3	DIMENSIONS FOR RAILROAD CROSSING SIGNS, SIGNALS, AND MARKINGS

REFERENCE PROJECT NO	FISCAL YEAR	SHEET NO
SCP 59-976-25	2025	2

GENERAL PROJECT & TRAFFIC CONTROL NOTES
PROJECT NO. SCP 59-976-25
SHELBY COUNTY

- 201: MOBILIZATION AND CONSTRUCTION FUEL SHALL BE SUBSIDIARY OBLIGATION OF THE CONTRACT.
- 202: IT SHALL BE THE CONTRACTOR'S RESPONSIBILITY TO INVENTORY ALL IN-PLACE STRIPING, MARKINGS AND LEGENDS AND REFERENCE THE LOCATIONS, SO THAT ALL REQUIRED STRIPING, MARKINGS AND LEGENDS SHALL BE PLACED BACK IN THE SAME LOCATIONS AS THEY WERE BEFORE RESURFACING OPERATIONS BEGAN. THE WORK INVOLVED IN INVENTORYING AND REFERENCING SHALL BE A SUBSIDIARY OBLIGATION OF ITEM THE CONTRACT. IF IN-PLACE STRIPING, MARKINGS AND LEGENDS DIFFER FROM REQUIREMENTS ON STANDARD DRAWINGS OR MUTCD, THE PROJECT ENGINEER SHALL BE NOTIFIED BEFORE WORK BEGINS.
- 203: ANY DAMAGE TO IN-PLACE PAVING, CURB AND GUTTER, SIDEWALK, GRASSING ETC. SHALL BE REPAIRED BY THE CONTRACTOR TO THE SATISFACTION OF THE ENGINEER AT NO COST TO THE PROJECT.
- 204: ALL STRIPING SHALL BE INSTALLED WITH A SHELBY COUNTY INSPECTOR ON SITE.
- 205: NIGHT WORK WILL NOT BE ALLOWED ON THIS PROJECT.
- 206: THERE SHALL BE NO LANE CLOSURES MONDAY-FRIDAY BETWEEN THE HOURS OF 7:00AM-9:00AM AND 4:00PM-6:00PM ON ALL UNITS OTHER THAN UNIT #6 (CR-280). NO LANE CLOSURES WILL BE ALLOWED ON UNIT #6 (CR-280) BETWEEN THE HOURS OF 7:00AM-9:00AM AND 2:30PM-6:00PM.
- 207: FLAGGERS SHALL BE PROPERLY ATTIRED AND EQUIPPED WITH STAFF MOUNTED STOP/SLOW PADDLES IN SIGHT OF EACH OTHER, OR HAVE DIRECT COMMUNICATION AT ALL TIMES. FLAGGER STATION LOCATION MAY BE VARIED FROM THOSE SHOWN BASED ON ROADWAY CONDITIONS AT THE TIME OF THE LANE CLOSURE.
- 208: THE WORK SITE SHALL BE KEPT CLEAN AT ALL TIMES FROM ANY DEBRIS, EXCESS MATERIALS, AND ALL OTHER ITEMS NOT SPECIFICALLY REQUIRED FOR CONSTRUCTION. ANY STRIPING MATERIAL SPILLED OR IMPROPERLY PLACED ON THE ROADWAY SHALL BE THE RESPONSIBILITY OF THE CONTRACTOR TO CLEAN UP IN A TIMELY MANNER.
- 209: THE CONTRACTOR SHALL COMPLETE THE ENTIRE PROJECT WITHIN 60 CALENDAR DAYS FROM THE WRITTEN NOTICE TO PROCEED DATE.

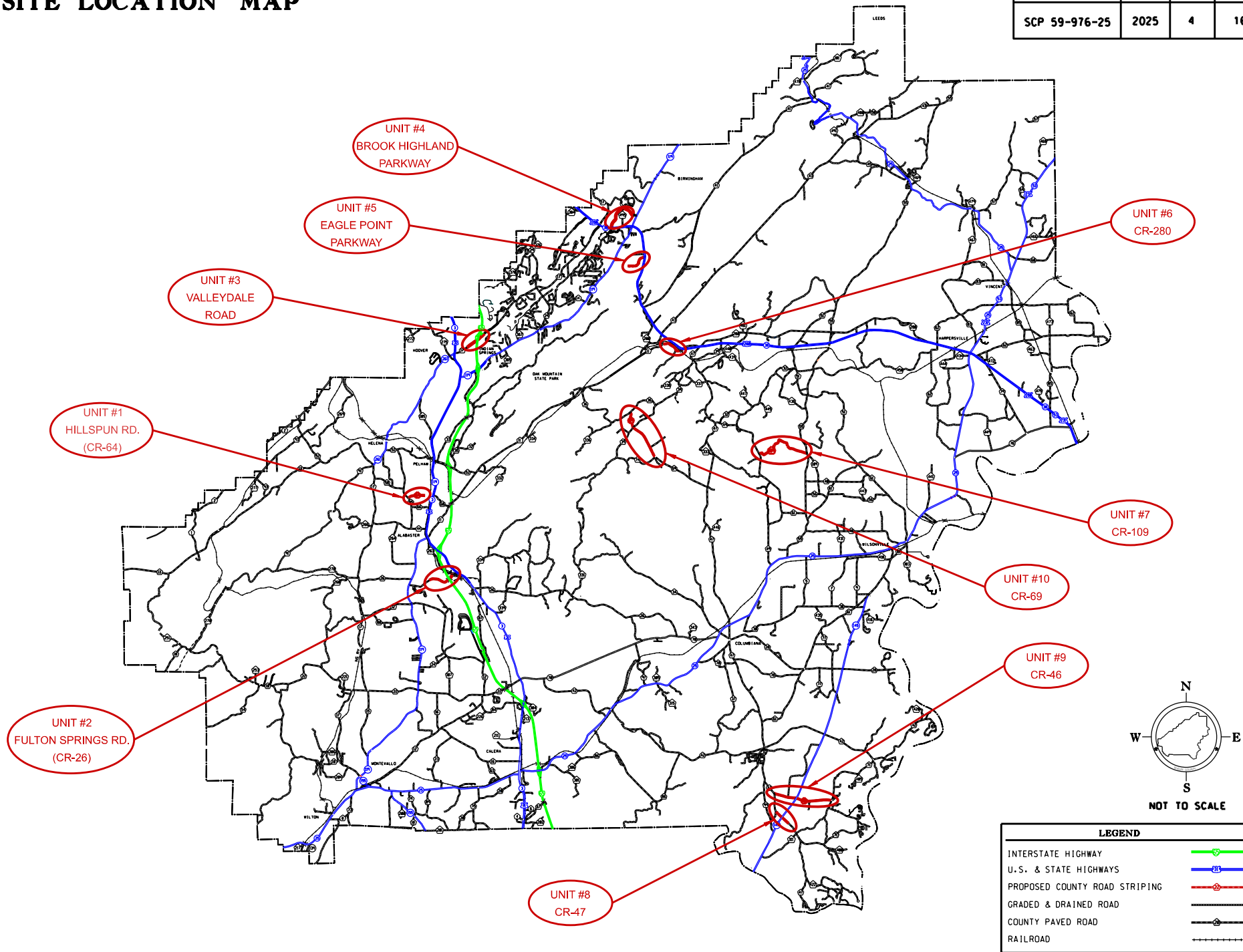
[illegible]

REFERENCE PROJECT NO	FISCAL YEAR	SHEET NO.
SCP 59-976-25	2025	3A

[illegible]

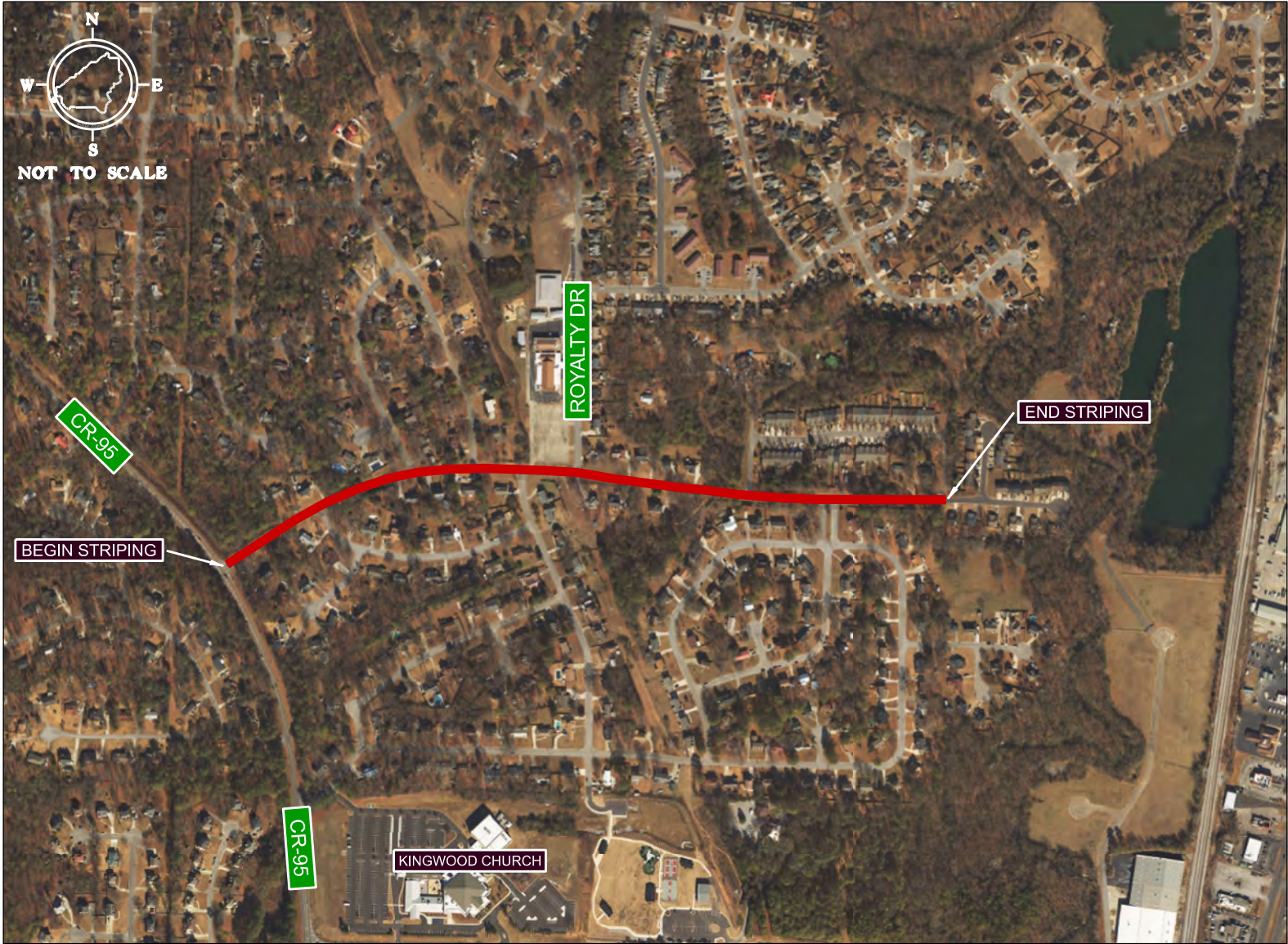
SITE LOCATION MAP

PROJECT NUMBER	FISCAL YEAR	SHEET NO.	TOTAL SHEETS
SCP 59-976-25	2025	4	16



REFERENCE PROJECT NO	FISCAL YEAR	SHEET NO
SCP 59-976-25	2025	5

UNIT #1 - HILLSPUN ROAD (CR-64)



LENGTH	3,180 LF
BEGIN	CR-95
END	WILLOW POINT SUBDIVISION

SCOPE: RE-STRIPE ROADWAY. INCLUDES LONG LINE TRAFFIC STRIPE, TRAFFIC CONTROL MARKINGS, TRAFFIC CONTROL LEGENDS AND RAISED PAVEMENT MARKERS.

REFERENCE PROJECT NO	FISCAL YEAR	SHEET NO
SCP 59-976-25	2025	6

UNIT #2 - FULTON SPRINGS ROAD (CR-26)



LENGTH	4,400 LF
BEGIN	RR TRACKS NEAR QUARRY
END	OLD HWY 31

SCOPE: RE-STRIP ROADWAY. INCLUDES LONG LINE TRAFFIC STRIPE, TRAFFIC CONTROL MARKINGS, TRAFFIC CONTROL LEGENDS AND RAISED PAVEMENT MARKERS.

REFERENCE PROJECT NO	FISCAL YEAR	SHEET NO
SCP 59-976-25	2025	7

UNIT #3 - VALLEYDALE ROAD



LENGTH	3,200 LF
BEGIN	RIVERCHASE PARKWAY
END	PAVING JOINT AT I-65 NB ON RAMP

SCOPE: RE-STRIPE ROADWAY. INCLUDES LONG LINE TRAFFIC STRIPE, TRAFFIC CONTROL MARKINGS, TRAFFIC CONTROL LEGENDS AND RAISED PAVEMENT MARKERS.

REFERENCE PROJECT NO	FISCAL YEAR	SHEET NO
SCP 59-976-25	2025	8

UNIT #4 - BROOK HIGHLAND PARKWAY



LENGTH	6,900 LF
BEGIN	US-280
END	END OF SHELBY COUNTY MAINTAINED PORTION

SCOPE: RE-STRIP ROADWAY. INCLUDES LONG LINE TRAFFIC STRIPE, TRAFFIC CONTROL MARKINGS, TRAFFIC CONTROL LEGENDS AND RAISED PAVEMENT MARKERS. ADD CROSSWALK STRIPING AS DETAILED ON SHEET 8A.

UNIT #4 - BROOK HIGHLAND PARKWAY CROSSWALK DETAIL



REFERENCE PROJECT NO	FISCAL YEAR	SHEET NO
SCP 59-976-25	2025	9

UNIT #5 - EAGLE POINT PARKWAY



LENGTH	2,300 LF
BEGIN	US-280
END	EAGLE POINT DRIVE

SCOPE: RE-STRIP ROADWAY. INCLUDES LONG LINE TRAFFIC STRIPE, TRAFFIC CONTROL MARKINGS, TRAFFIC CONTROL LEGENDS AND RAISED PAVEMENT MARKERS.

REFERENCE PROJECT NO	FISCAL YEAR	SHEET NO
SCP 59-976-25	2025	10

UNIT #6 - CR-280

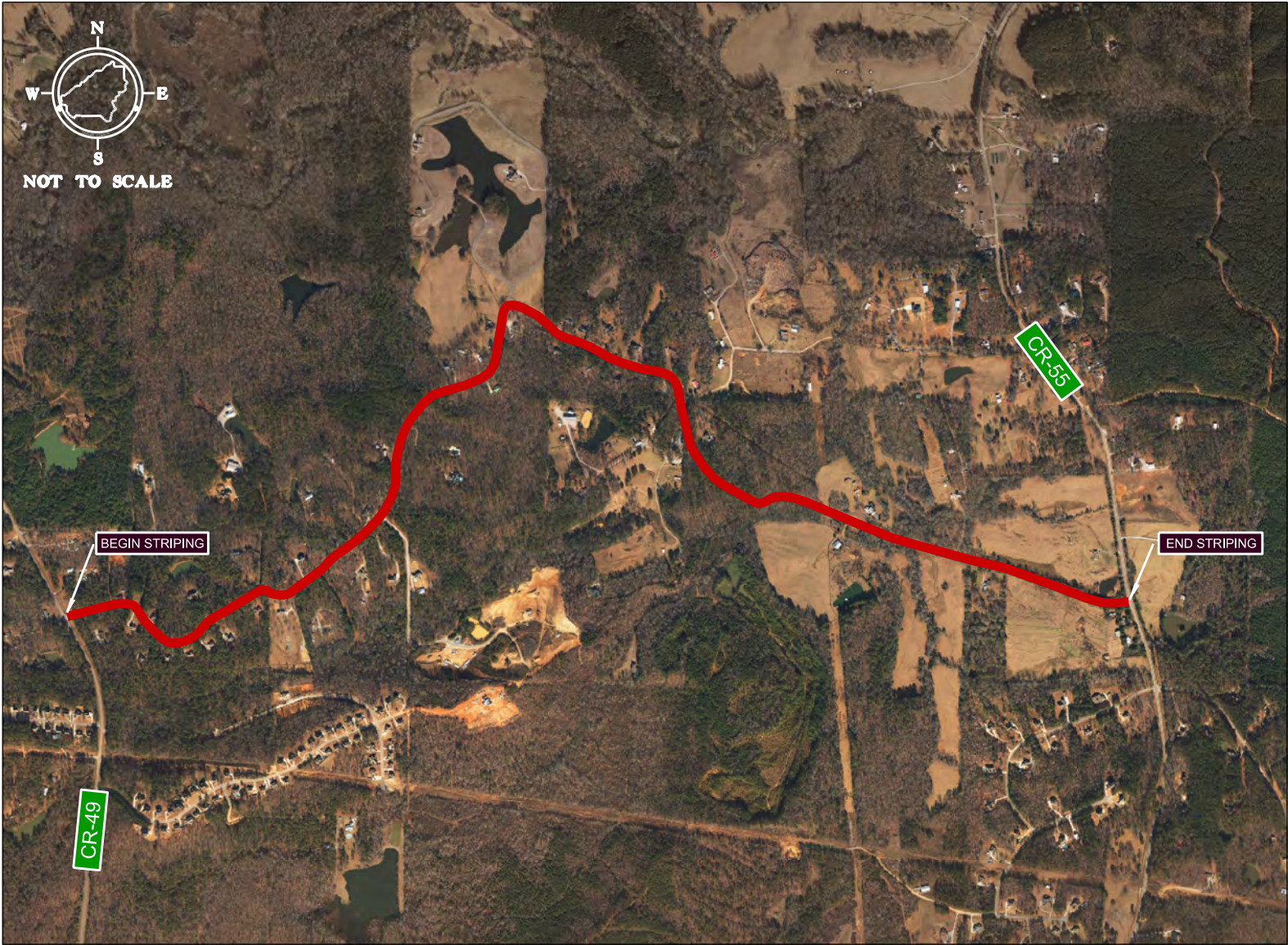


LENGTH	5,000 LF
BEGIN	PAVING JOINT EAST OF CR-11
END	US-280 IN CHELSEA

SCOPE: RE-STRIPE ROADWAY. INCLUDES LONG LINE TRAFFIC STRIPE, TRAFFIC CONTROL MARKINGS, TRAFFIC CONTROL LEGENDS AND RAISED PAVEMENT MARKERS.

REFERENCE PROJECT NO	FISCAL YEAR	SHEET NO
SCP 59-976-25	2025	11

UNIT #7 - CR-109



LENGTH	13,100 LF
BEGIN	CR-49
END	CR-55

SCOPE: RE-STRIPE ROADWAY. INCLUDES LONG LINE TRAFFIC STRIPE, TRAFFIC CONTROL MARKINGS, TRAFFIC CONTROL LEGENDS AND RAISED PAVEMENT MARKERS.

REFERENCE PROJECT NO	FISCAL YEAR	SHEET NO
SCP 59-976-25	2025	12

UNIT #8 - CR-47



LENGTH	RUMBLE STRIPS - SEE DETAIL
BEGIN	
END	

SCOPE: PLACE THERMOPLASTIC RUMBLE STRIPS ON BOTH SEGMENTS OF CR-47 APPROACHING SR-145. SEE ALDOT STANDARD DRAWING FOR DETAILS.

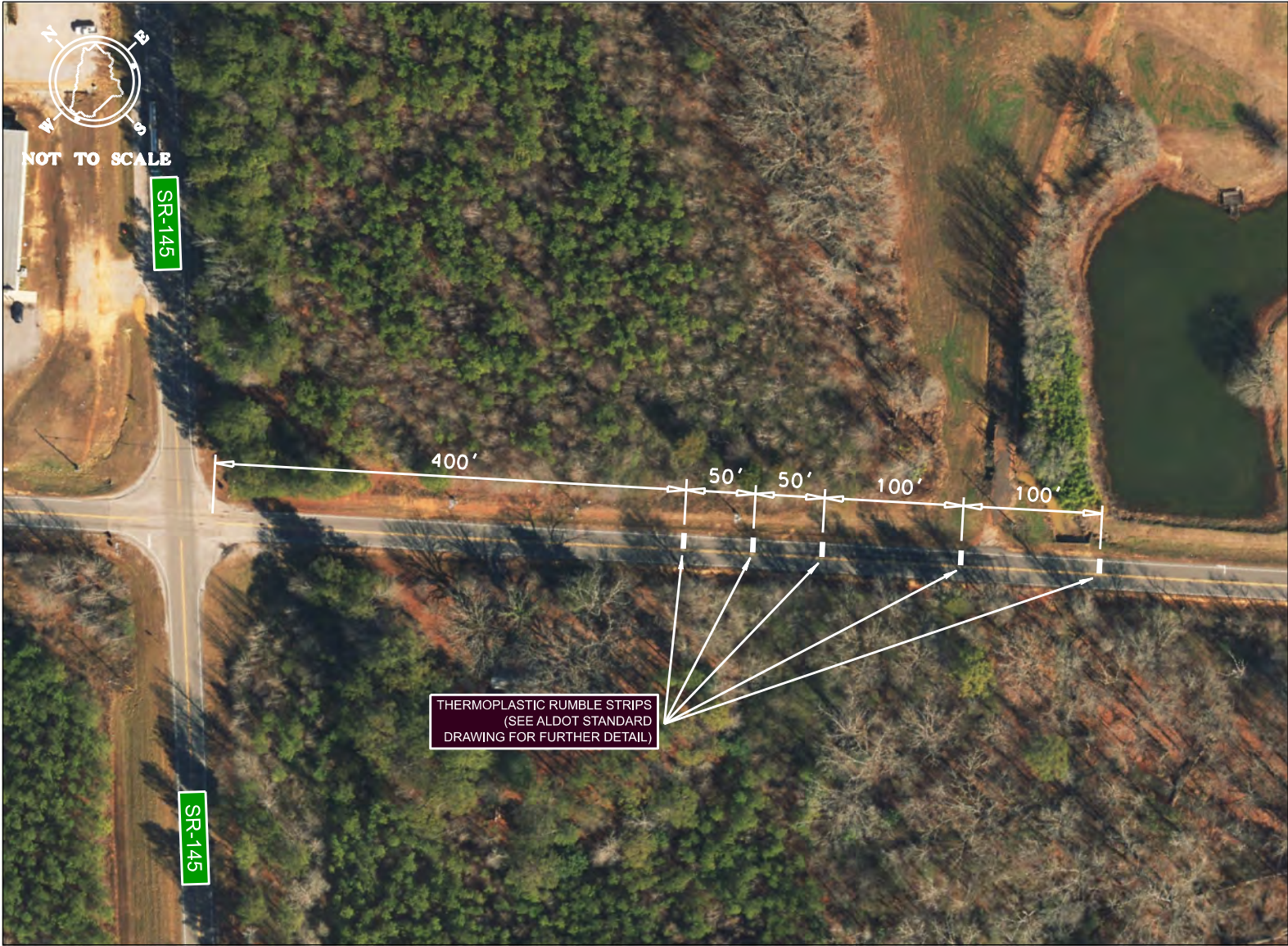
REFERENCE PROJECT NO	FISCAL YEAR	SHEET NO
SCP 59-976-25	2025	12A

UNIT #8 - CR-47 (SOUTHBOUND APPROACH)



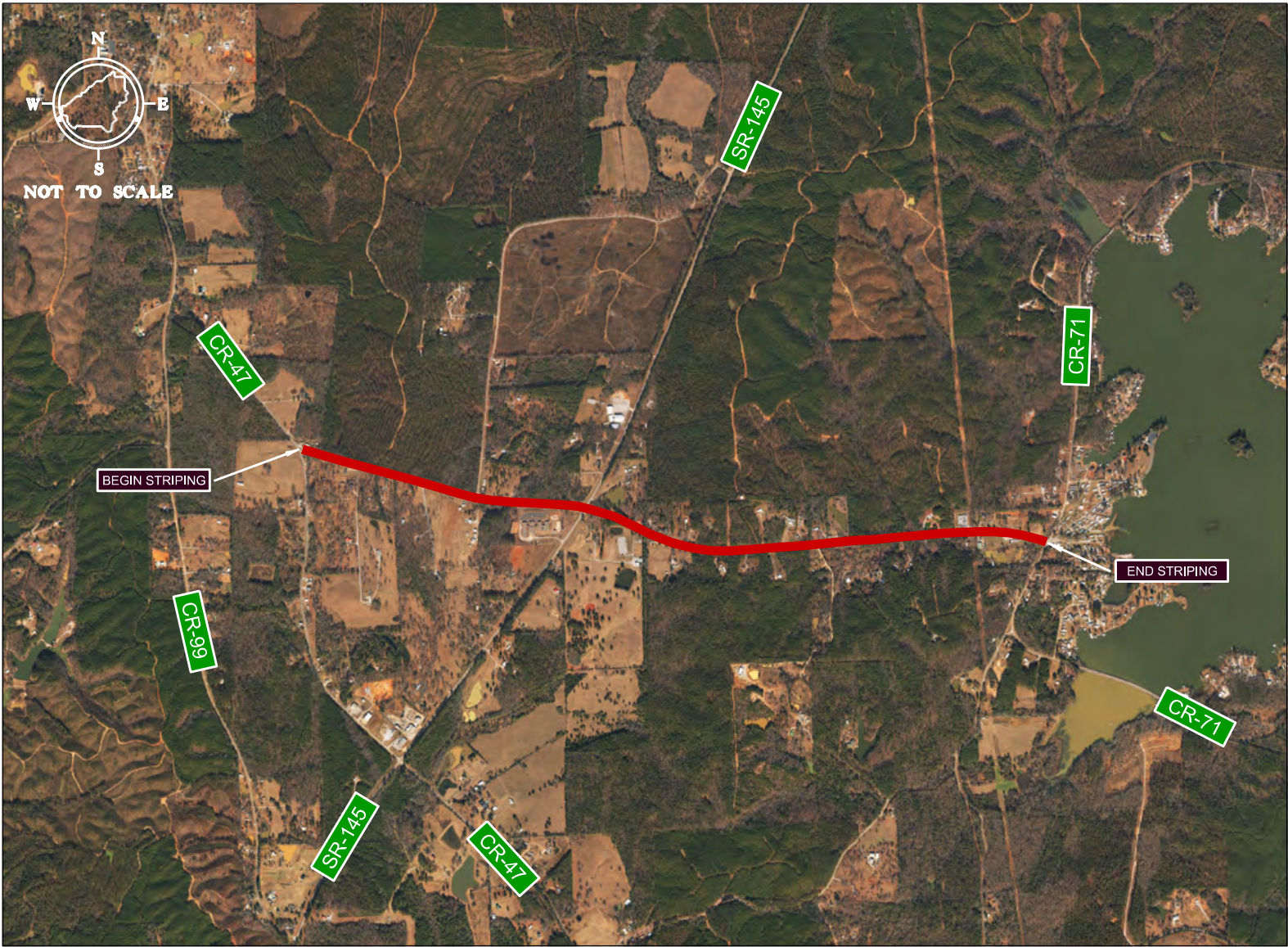
REFERENCE PROJECT NO	FISCAL YEAR	SHEET NO
SCP 59-976-25	2025	12B

UNIT #8 - CR-47 (NORTHBOUND APPROACH)



REFERENCE PROJECT NO	FISCAL YEAR	SHEET NO
SCP 59-976-25	2025	13

UNIT #9 - CR-46

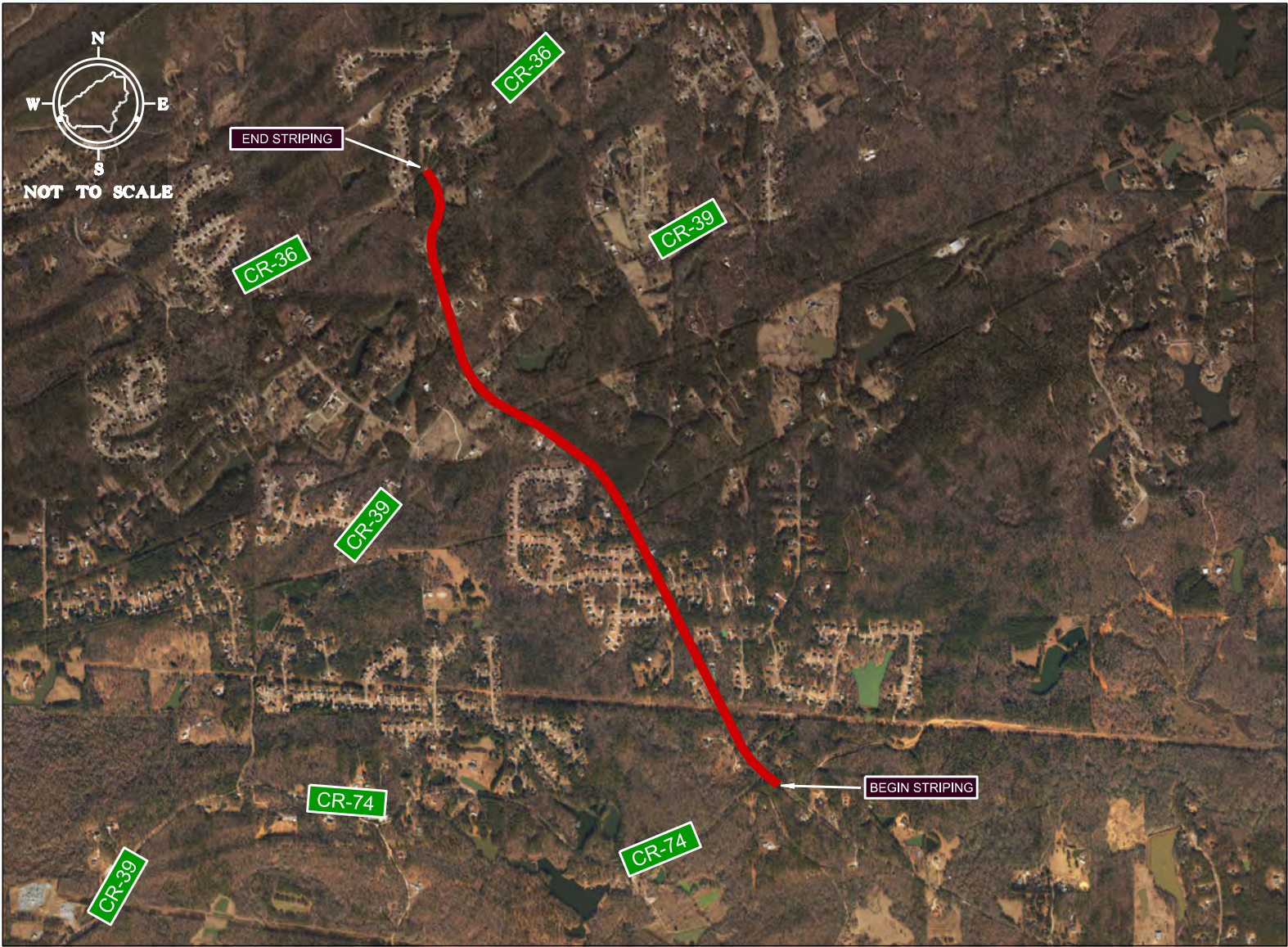


LENGTH	12,500 LF
BEGIN	CR-47
END	CR-71

SCOPE: RE-STRIPED ROADWAY. INCLUDES LONG LINE TRAFFIC STRIPE, TRAFFIC CONTROL MARKINGS, AND TRAFFIC CONTROL LEGENDS. RAISED PAVEMENT MARKERS ALREADY COMPLETED BY COUNTY FORCES.

REFERENCE PROJECT NO	FISCAL YEAR	SHEET NO
SCP 59-976-25	2025	14

UNIT #10 - CR-69



LENGTH	11,800 LF
BEGIN	CR-74
END	CR-36

SCOPE: RE-STRIPE ROADWAY. INCLUDES LONG LINE TRAFFIC STRIPE, TRAFFIC CONTROL MARKINGS, TRAFFIC CONTROL LEGENDS AND RAISED PAVEMENT MARKERS.

REFERENCE PROJECT NO

FISCAL YEAR

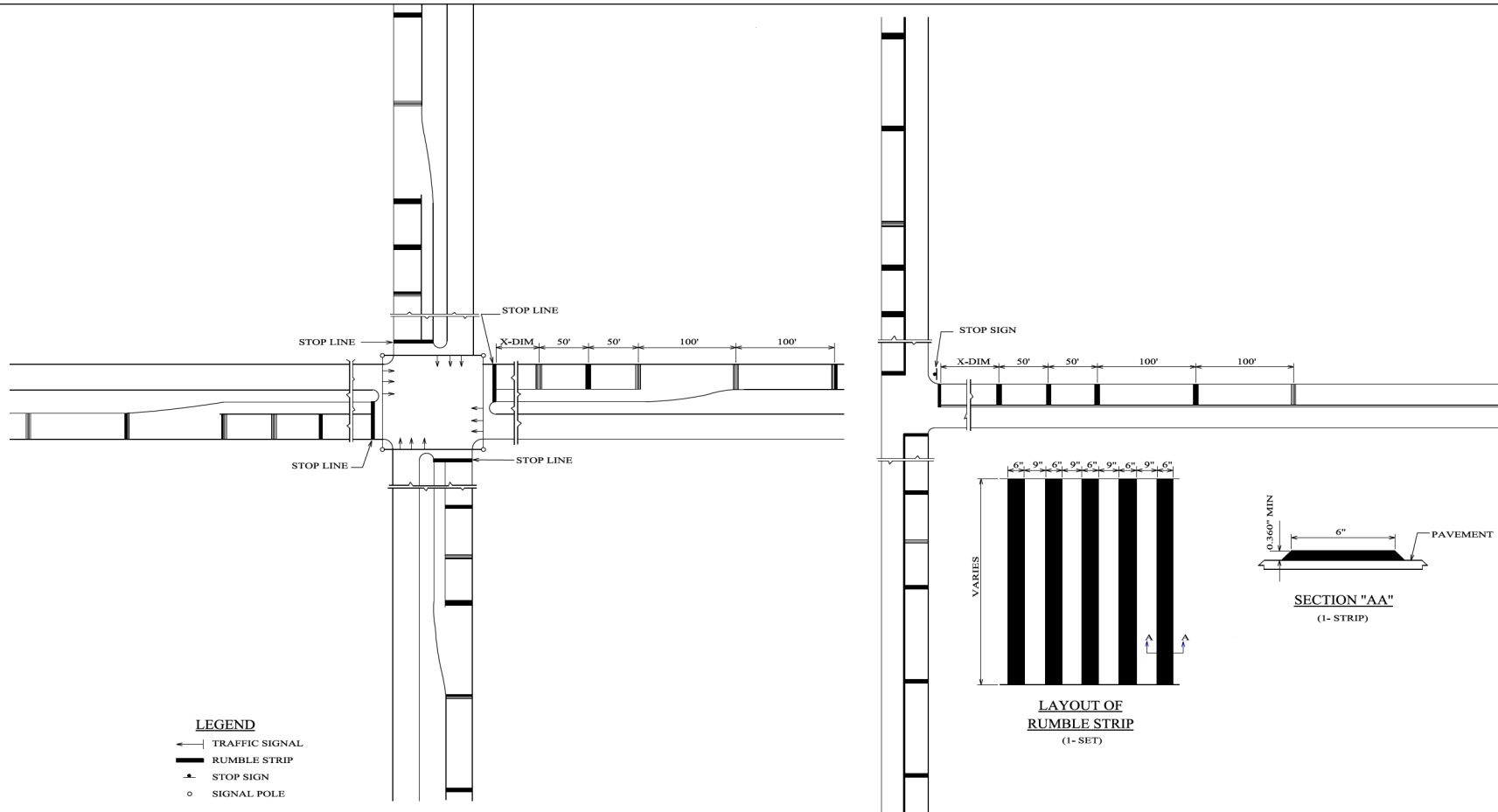
SHEET NO

SCP 59-976-25

2025

15

THERMOPLASTIC RUMBLE STRIP STANDARD DRAWING



LEGEND

- TRAFFIC SIGNAL
- RUMBLE STRIP
- STOP SIGN
- SIGNAL POLE

X-DIMENSION

SPEED LIMIT ON ROADWAY	DISTANCE FROM NEAREST RUMBLE STRIP TO INTERSECTION
60 MPH	600'
50 MPH	450'
40 MPH	350'
30 MPH	250'

GENERAL NOTES

- USE MULTIPLE APPLICATIONS TO ACHIEVE DESIRED 0.360" MINIMUM THICKNESS.
- MATERIALS MAY BE CLASS 2, TYPE A TRAFFIC STRIPE (0.360"-0.425") (WHITE) OR THERMOPLASTIC MATERIAL IN A PREFORMED STATE (0.375"-0.450") (WHITE).
- FIVE SETS OF FIVE STRIPS PER SET ON EACH APPROACH.
- COST OF THERMOPLASTIC RUMBLE STRIPS TO BE PAID AS 701G-251 (6" WIDE) OR 701G-252 (5" WIDE) (RUMBLE STRIP) PER LIN. FT.

NOT TO SCALE

—SPECIFICATIONS—
CURRENT ALABAMA DEPARTMENT OF TRANSPORTATION

ALABAMA DEPARTMENT
OF TRANSPORTATION
1400 COLLEUM BOULEVARD
MONTGOMERY, AL 36106-0009

THIS DRAWING REPRESENTS DESIGNS PREPARED FOR USE BY THE ALABAMA DEPARTMENT OF TRANSPORTATION AND IS NOT TO BE COPIED, REPRODUCED, ALTERED, OR USED BY ANYONE, OR ANY ORGANIZATION, WITHOUT THE EXPRESSED WRITTEN CONSENT OF THE ALABAMA DEPARTMENT OF TRANSPORTATION REPRESENTATIVE AUTHORIZED TO APPROVE THIS USE. ANYONE MAKING UNAUTHORIZED USE OF THIS DRAWING MAY BE PROSECUTED TO THE FULLEST EXTENT OF THE LAW.

REVISIONS

1. Replaced State No. 4 on 1-31-2007 by W.W.A.

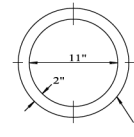
DESIGNER: D.J.W.
DRAWN BY: J.F.T.
DATE DRAWN: 10-2-2007
REVISED DATE: 1-31-2007

DESIGN BUREAU SPECIAL DRAWING
DETAILS OF THERMOPLASTIC RUMBLE STRIPS

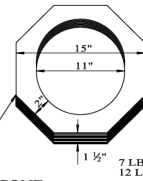
SPECIAL DRAWING NO
PM-705-5

INDEX NO
70183

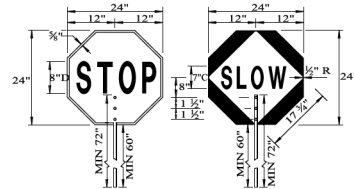
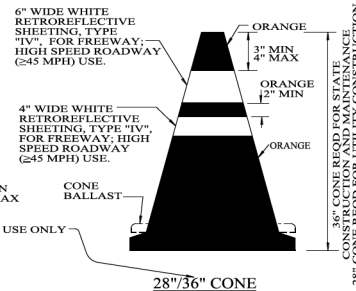
LANE CLOSURE / TRAFFIC CHANNELIZATION DEVICES DETAILS



BALLAST FOR CONE
BALLAST SHALL BE REQUIRED
ALL DIMENSIONS ARE APPROXIMATE.

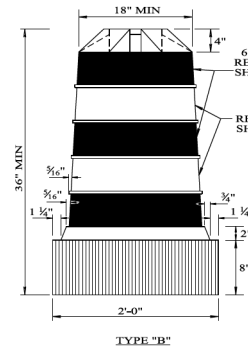


DAYTIME USE ONLY
CONE BALLAST



STAFF MOUNTED PADDLES

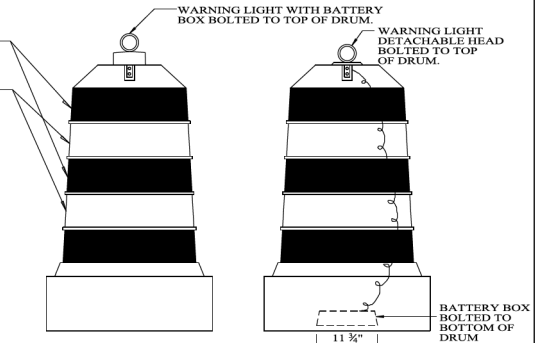
THE STAFF MOUNTED PADDLES SHALL BE FABRICATED USING TYPE "III" OR "IV" RETROREFLECTIVE SHEETING ON BOTH SIDES. THE STOP SIGN SHALL HAVE A RED BACKGROUND WITH WHITE LEGEND AND BORDER. THE SLOW SIGN SHALL HAVE AN ORANGE BACKGROUND WITH BLACK LEGEND AND BORDER.



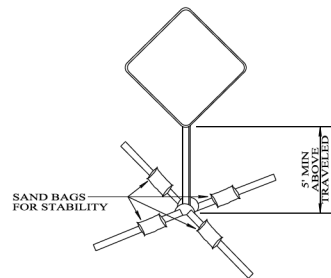
CHANNELIZING DRUM DESIGN

CHANNELIZING DRUMS SHALL BE FLEXIBLE PLASTIC, SET ON END AND COLOR SHALL BE ORANGE AND WHITE RETROREFLECTIVE STRIPES AND SHOULD NEVER BE PLACED IN THE ROADWAY WITHOUT ADVANCED WARNING SIGNS. DRUMS SHOULD NOT BE WEIGHTED TO THE EXTENT THAT WOULD MAKE THEM HAZARDOUS TO MOTORISTS.

RETROREFLECTIVE SHEETING DESIGN
RETROREFLECTIVE SHEETING USED ON CHANNELIZING DRUMS SHALL BE TYPE "IV", AS DESCRIBED IN THE ALABAMA DEPARTMENT OF TRANSPORTATION STANDARD SPECIFICATIONS, SECTION 880. ORANGE SHALL BE FLUORESCENT

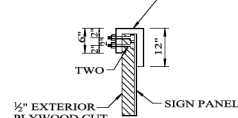


**EXAMPLES OF WARNING LIGHT ATTACHED TO DRUM
(ONLY WHEN REQUIRED)**



**TYPICAL SIGN INSTALLATION
(TEMPORARY SUPPORTS)**

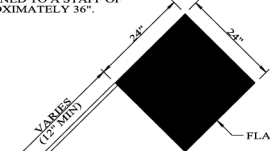
REQD (TWO) 1/2" THICK x 2" WIDE METAL HANGERS MOUNTED FOR EACH SIDE OF TOP EDGE OF SIGN PANEL WITH THE USE OF 1/2" BOLTS COUNTER-SUNK INTO PLYWOOD.



**INSTALLATION OF SIGN
COVERING MATERIAL
DURING NON-USE**

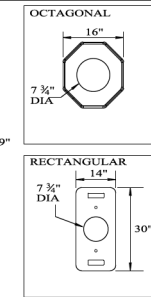
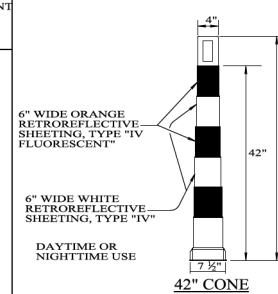
EXPOSED SURFACE MAY BE PAINTED. IF PAINTED, COLOR SHALL BE BLACK. ALTERNATE TYPES OF COVERING MATERIAL AND METHODS OF INSTALLATION MAY BE SUBMITTED BY THE CONTRACTOR FOR CONSIDERATION OF APPROVAL BY THE DEPARTMENT.

THE HAND SIGNALING FLAG SHALL BE MADE OF A RED OR FLUORESCENT ORANGE/RED SEMI-FLEXIBLE VINYL WITH HEAT SEALED WELT SECURELY FASTENED TO A STAFF OF APPROXIMATELY 36".



HAND SIGNALING FLAG

FLAGS SHOULD ONLY BE USED UNDER EMERGENCY CONDITIONS, OR AT A SPOT LOCATION WHICH CAN BEST BE CONTROLLED BY A SINGLE FLAGGER USING A FLAG.



**BALLAST
FOR CONE**

BALLAST SHALL BE REQUIRED ALL DIMENSIONS ARE APPROXIMATE.

RETROREFLECTIVE SHEETING DESIGN
RETROREFLECTIVE SHEETING USED ON CHANNELIZING CONES SHALL BE TYPE "IV", AS DESCRIBED IN THE ALABAMA DEPARTMENT OF TRANSPORTATION STANDARD SPECIFICATIONS, SECTION 880. ORANGE SHALL BE FLUORESCENT

NOTES:

- ALL DEVICES THAT ARE USED FOR WORK ZONE TRAFFIC CONTROL SHALL MEET ONE OF THE FOLLOWING:
FOR DEVICES MANUFACTURED PRIOR TO JANUARY 1, 2020:
"CRASHWORTHY" REQUIREMENTS GIVEN IN THE NATIONAL COOPERATIVE HIGHWAY RESEARCH PROGRAM (NCHRP) REPORT 350 FOR THE APPROPRIATE CATEGORY OF DEVICE. THESE DEVICES SHALL NOT BE USED AFTER DECEMBER 31, 2024.

FOR DEVICES MANUFACTURED ON OR AFTER JANUARY 1, 2020:
CRASHWORTHY REQUIREMENTS GIVEN IN THE AASHTO MANUAL FOR ASSESSING SAFETY HARDWARE (MASH), 2016, FOR THE APPROPRIATE CATEGORY OF DEVICE.

NOT TO SCALE

—SPECIFICATIONS—
CURRENT ALABAMA DEPARTMENT OF TRANSPORTATION

SPECIAL DRAWING NO INDEX NO

TCD-100 74007



**ALABAMA DEPARTMENT
OF TRANSPORTATION**
1400 COLISEUM BOULEVARD
MONTGOMERY, AL 36106-0000

THIS DRAWING REPRESENTS DESIGNS PREPARED FOR USE BY THE ALABAMA DEPARTMENT OF TRANSPORTATION AND IS NOT TO BE COPIED, REPRODUCED, ALTERED OR USED BY ANYONE, OR ANY ORGANIZATION, WITHOUT THE EXPRESSED WRITTEN CONSENT OF THE ALABAMA DEPARTMENT OF TRANSPORTATION REPRESENTATIVE AUTHORIZED TO APPROVE THIS USE. ANYONE MAKING UNAUTHORIZED USE OF THIS DRAWING MAY BE PROSECUTED TO THE FULLEST EXTENT OF THE LAW.

REVISIONS:

- Added Drum w/ Battery Bolted Warning Light on 6-25-2010 by J.E.T.
- Changed Reflectorized to Retroreflective removed Warning Flag Mounting details, removed warning flag from typical sign installation detail, updated cones per 2009 MUTCD on 10-26-2013 by C.J.C.
- Updated Typical Sign Installation (Temporary Supports) Detail on 9-8-2014 by C.J.C.
- Revised because T.C.P. Notes state 5' min height for Temporary Sign Support on 8-25-2015 by J.E.T.
- Updated 28" 36" Cone Detail, deleted HAND HELD PADDLES and added 42" Cone Detail on 5-6-2019 by D.J.W. and J.E.T.
- Changed sheeting type for cones and drums to IV only on 1-5-2021 by D.J.W.
- Modified note 1 to include MASH and transition requirements on 8-23-2021 by D.J.W.

Drawn By: D.J.W.
Drawn By: 11-5-1999
Revised Date: 8-23-2021

DESIGN BUREAU SPECIAL DRAWING
**DETAILS FOR TRAFFIC
CHANNELIZATION DEVICES**